



38 Offord Road, London, N1 1DL

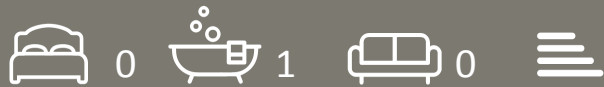
£365,000

38 Offord Road, London N1 1DL

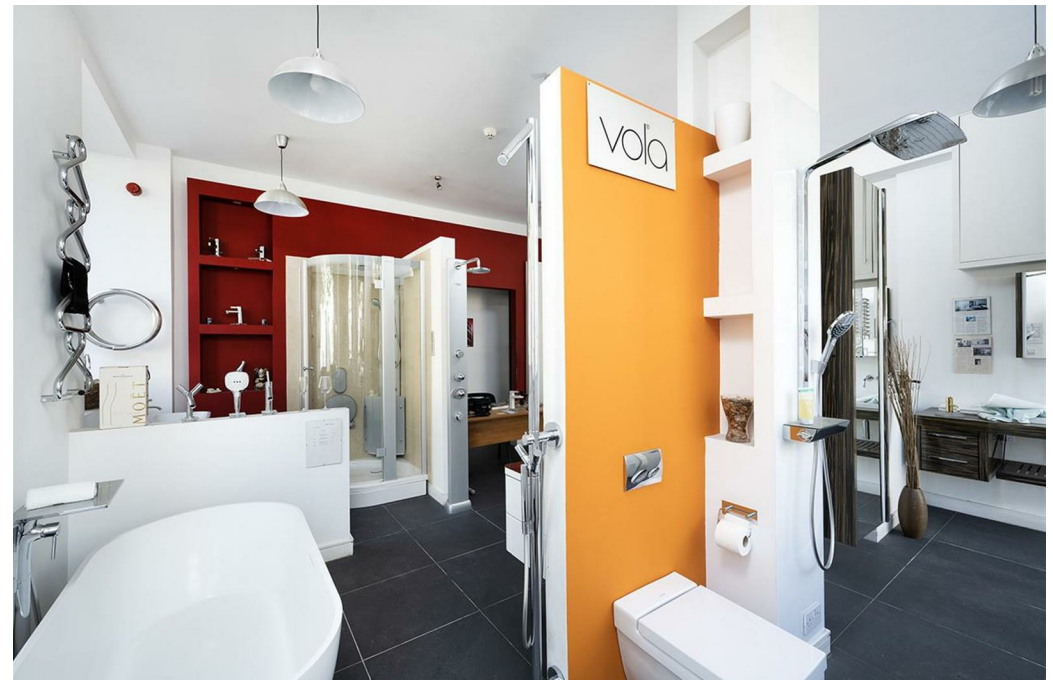
Alwyne Estates are sole agents on this fantastic leasehold Commercial Shop for sale with a lease of over 900 years. The commercial premises is split over two floors and spans over a total of 80Sq metres and is currently used as a kitchen showroom.

The property is in a prominent corner position in the heart of Barnsbury, N1 with lots of passing foot fall.

The property has excellent transport links with Highbury & Islington underground and Barnsbury & Caledonian Overground within walking distance.



Council Tax Band:

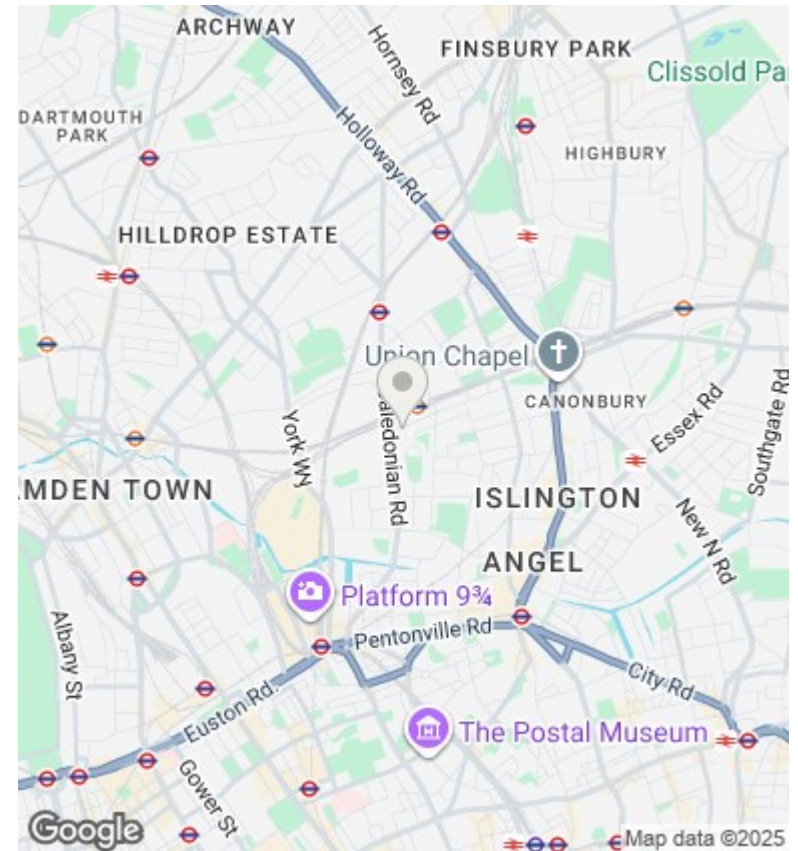


Directions

Viewings

Viewings by arrangement only. Call 02073593191 to make an appointment.

Council Tax Band



Energy Efficiency Rating		
	Current	Potential
Very energy efficient - lower running costs		
(92 plus) A		
(81-91) B		
(69-80) C		
(55-68) D		
(39-54) E		
(21-38) F		
(1-20) G		
Not energy efficient - higher running costs		
England & Wales	EU Directive 2002/91/EC	

Full description

Alwyne Estates are sole agents on this fantastic leasehold Commercial Shop for sale. The property is in a prominent corner position in the heart of Barnsbury, N1 with lots of footfall. The property has excellent transport links with Highbury & Islington underground and





